

# 2015 CHINA CYCLE

创新产品  
评选  
获奖  
产品展

CREATIVE  
AWARD  
PRODUCTS  
EXHIBITION

2015  
CHINA  
CYCLE

创新产品  
评选  
获奖  
产品展

CREATIVE  
AWARD  
PRODUCTS  
EXHIBITION

# 2015 CHINA CYCLE

## 创新产品 评选 获奖 产品展

### CREATIVE AWARD PRODUCTS EXHIBITION

由中国自行车协会、中国国际自行车展由中国自行车协会、中国国际自行车展览会组委会主办的“CHINA CYCLE 创新产品评选”举办已经4年，4年来，我们尽心恪守评选宗旨：提升自行车自主品牌竞争力、扩大自行车创新成果影响力、促进自行车设计研发转化力，获奖的创新产品真实代表着业界的创新能力、产品水平和产业潮流，创新产品评选的权威性与公正性得到了参展企业的广泛认可。

今年的评选，一如既往受到了自行车整车、电动自行车、零配件、户外骑行用品等国内外参展企业的热烈响应和积极参与。本届创新产品评选活动共有161个产品报名参评，其中自行车整车37件，电动车整车8件，自行车、电动车零部件73件，户外用品（骑行装备）43件。经过行业专家在“设计、功能、市场、材料、创新”五方面的考量与初评，将50件入围产品在“中国国际自行车展览会”官网上进行公示，通过网络投票和现场评审，最终有10件产品脱颖而出，获得金奖，39件产品获得创新奖。1件产品缺席复评。

我们非常荣幸能够为业界的创新成果提供集中展示与宣传的平台，我们相信，中国自行车产业的未来就在这点点滴滴、踏实不懈的创新之中，而“CHINA CYCLE 创新产品评选”也将与中国自行车产业共同成长，不断引导产业的“创新之风”，为中国自行车企业树品牌、谋效益发挥更加重要的作用！

# 2015 CHINA CYCLE

创新产品  
评选  
获奖  
产品展

CREATIVE  
AWARD  
PRODUCTS  
EXHIBITION

*"CHINA CYCLE Innovative Product Selection" which is hold by the China Bicycle Association and China International Bicycle Exhibition Organizing Committee has been held for three years. For four years, we abide by the purpose of selection: Enhance the competitiveness of China's own brand bikes, Expand bike innovations influence, Promote the development of bicycle design transformed force. The award-winning innovative products represent true innovation ability of the industry, product standards and industry trends. Innovative Product Selection's authority and impartiality has been widely recognized by exhibitors.*

*This year's Innovative Product Selection, as always, is warm responded and actively involved by the complete bicycles, electric bicycles, spare parts, supplies, and other outdoor riding domestic exhibitors. This year's Innovative Product Selection received 161 products, composed by 37 bicycles, 8 electric vehicles, 73 parts of bicycles and electric vehicles, 43 riding equipments. After industry experts' considerations and evaluation in the five areas of design, function, marketing, materials and innovation, there were 50 finalists in the "China International Bicycle Exhibition" official online publicity. Through online voting and on-site assessment, there were 10 products eventually come to the fore and won the gold medals, 39 products won the Innovation Award, 1 product was absent of product selection.*

*We are much honored to be able to provide a platform for showcasing innovation and promotion of the industry. We believe that the future of China's bicycle industry is in this kind of bit by bit innovation. The "CHINA CYCLE Innovative Product Selection" will grow with Chinese bicycle industry and continue to guide the "innovative wind" in this industry. In the future, "CHINA CYCLE Innovative Product Selection" will play a more important role in treeing Chinese enterprises' bicycle brand and seeking benefits.*

## 组织机构

### 主办单位

中国自行车协会  
中国国际自行车展览会组委会

### 协办单位

全国自行车工业信息中心  
国家自行车质量监督检验中心  
上海创意产业中心

### 承办单位

上海协升展览有限公司

### 支持单位

世界工业设计联合会  
中国工业设计协会

## 评委

霍晓云 / 中国国际自行车展览会组委会秘书长  
贾 刚 / 中国自行车协会副秘书长  
张 为 / 国家自行车电动自行车质量监督检测中心高级工程师  
傅月明 / 好孩子儿童用品有限公司设计总监  
李保健 / 《中国自行车》杂志总编  
何增强 / 上海创意产业中心秘书长  
杨文庆 / 中国工业设计十佳杰出设计师  
谢春雷 / 上海工业设计协会理事  
张 展 / 上海第二工业大学应用艺术设计学院院长  
Soon-in Lee / 世界工业设计联合会会长

## ORGANIZATION

### Host

China Bicycle Association  
China International Bicycle & Motor Fair  
Shanghai Xiesheng Exhibition Co., Ltd.

### Organizers

National Bicycle Quality Supervision and Inspection Center  
National Bicycle Information Center  
Shanghai Creative Industry Center

### Supported by

The International Council of Societies of Industrial Design  
China Industrial Design Association

## JUDGES

### Xiaoyun Huo

Secretary-General of the Organizing Committee of China International Bicycle Exhibition

### Gang Jia

Deputy Secretary-General of China Bicycle Association

### Wei Zhang

Senior Engineer of National Bicycle/Electric Bicycle Quality Supervision and Inspection Center

### Yueming Fu

Goodbaby Child Products Co., Ltd. Design Director

### Baojian Li

Magazine editor of "China Bicycle"

### Zengqiang He

Secretary-General of the Shanghai Creative Industry Center

### Wenqing Yang

Top Ten Outstanding Designers of China Industrial Design

### Chunlei Xie

Director of Shanghai Industrial Design Association

### Zhan Zhang

Dean of Shanghai Applied Arts Design College Second Polytechnic University

### Soon-in Lee

Chairman of International Industrial Design Association

# 2015 CHINA CYCLE

## 评委 简介

## INTRODUCTION OF JUDGES



霍晓云 / Xiaoyun Huo

中国国际自行车展览会组委会秘书长  
*Secretary-General of the Organizing Committee  
of China International Bicycle Exhibition*

硕士研究生，高级会展师。现任中国自行车协会副理事长，全国自行车工业信息中心主任、中国国际自行车展览会组委会秘书长、上海协升展览有限公司总经理。1976年2月在北京服役。1981年3月退役后进入上海自行车厂，历任工人、团委干事、技术员、工程师。1991年3月在上海自行车集团公司工作，历任团委书记、宣教处长、政工部副部长。1996年12月起至今，历任中国自行车协会展览办主任、副秘书长、副理事长；上海协升有限公司总经理、中国国际自行车展览会秘书长、全国自行车工业信息中心主任。

*Graduate students, senior exhibition division. Deputy director of China bicycle association, director of National Bicycle Industry Information Center, General secretary of China International Bike & E-bike Fair Organizing Committee, general manager of Shanghai Xiesheng Exhibition Co., Ltd. Served in Beijing in 1976. Retired in March 1981 and entered the Shanghai Bicycle Factory. Used to be a worker, league secretary, technician and engineer. From March 1991, worked in Shanghai Bicycle Company, served as secretary of the Communist Youth League, director, Vice Minister of Ministry of education. From December 1996 to date, served as exhibition office director, deputy secretary general and vice chairman of China Bicycle Association; general manager of Shanghai Xiesheng Exhibition Co., Ltd.; secretary general of China International Bicycle Exhibition; director of the National Bicycle Industry Information Center.*



## 贾刚 / Gang Jia

中国自行车协会副秘书长  
Deputy Secretary-General of  
China Bicycle Association

现担任中国自行车协会副秘书长，兼中国自行车协会骑行文化促进中心主任、文化技术部主任等职务，主要负责行业标准、培训、技术及自行车文化推广等方面工作。多次策划实施行业大型活动，组织编写行业人力资源、技能培训、专利技术等方面专题报告及资料，对自行车产业的现状和发展有较深研究。

*Vice secretary of China Bicycle Association, director of the center to promote cycling culture, cultural and technical director of China Bicycle Association. Mainly responsible for the industry standard, training, technology and bicycle culture promotion and other aspects of the work. Planned and implemented large-scale activities of bicycle industry for many times. Organized writing special reports and data of industry human resources, skills training, patent technology. Have a deeper study of the status and development of bicycle industry.*



## 张为 / Wei Zhang

国家自行车电动自行车  
质量监督检测中心  
高级工程师  
Senior Engineer of National Bicycle/Electric Bicycle  
Quality Supervision and Inspection Center

正高级工程师，从事机械产品的研发制造和工艺技术的研发。在自行车制造业工作 40 年，曾获得 5 项实用新型技术专利，多次获得天津市科技进步奖和轻工联合会科技进步奖。多次获得“技术创新优秀管理者”称号。参与国家和行业标准的制定和修订工作。

*Senior engineer, engaged in research and technology R & D and manufacturing of machinery products. Work in bicycle manufacturing industry for 40 years. Obtained 5 utility model patents, won several Tianjin Municipal Science and Technology Progress Award and the Federation of Light Industry Science and Technology Progress Award. Won the title of "Outstanding Technological Innovation Management Workers" for many times. Participate in national and industry standards and revision work.*



## 傅月明 / Yueming Fu

好孩子儿童用品有限公司设计总监  
*Goodbaby Child Products Co., Ltd. Design Director*

1994年创办工业设计中心，后成立深圳市蜻蜓工业设计公司，1995年主持设计中国第一辆“小福星”家庭汽车。2000年加盟好孩子集团，现任总裁助理兼设计总监。2008年被评为影响上海设计的100位（个）设计师和机构者之一。兼任齐齐哈尔大学艺术学院客座教授。

*Founded Industrial Design Center in 1994. Established Shenzhen Dragonfly Industrial Design Company. In 1995, be general designer of China's first family car named "Lucky". Joined the Good Children Group in 2000. One of the 100 of designers and institutions influencing Shanghai. Visiting professor of Art College of Qiqihar University.*



## 李保健 / Baojian Li

《中国自行车》杂志总编  
*Editor-in-Chief of "China Bicycle" Magazine*

1989年起担任《中国自行车》杂志总编。《中国自行车》杂志是业界最具权威性刊物，集国内外自行车和电动自行车科技、生产、营销、文化于一体，传播业界的新时尚、新理念、新技术。

*Magazine editor in chief of "China Bicycle" since 1989. "China bicycle" magazine is the most authoritative publications of bicycle industry, setting the bicycle and electric bicycle technology, production, marketing and culture in one. Spread new fashion, new ideas, new technology of bicycle industry.*





## 何增强 / Zengqiang He

上海创意产业中心秘书长

Secretary-General of

Shanghai Creative Industry Center

2005年起担任上海创意产业中心秘书长，主要从事创意产业规划咨询、产业平台、活动策划、理论研究等方面的工作。与上海汽车集团合作，成功打造一批蜚声中外的创意产业园区项目。先后与昆山和铜陵的政府部门合作，开展文创设计推进计划，致力于推动“创意产业化”和“产业创意化”，促进区域经济发展与产业转型。连续7年承办具有重要国际影响力的“上海国际创意产业活动周”。

General secretary of Shanghai creative industry center since 2005. Mainly engaged in creative industry planning consultation, industrial platform, event planning, research and other aspects of the work. Cooperation with Shanghai Automobile Group, successfully built a number of renowned creative industrial park project. Launch "design promotion plan" cooperating with Kunshan and Tongling's government departments, committed to promoting the "creative industries" and "creative industry", promoting regional economic development and industrial transformation. Undertake with important international influence "Shanghai International Creative Industry week" for 7 consecutive years.



## 杨文庆 / Wenqing Yang

中国工业设计十佳杰出设计师

Top Ten Outstanding Designers of

China Industrial Design

现任同济大学设计创意学院副教授，参与产品设计和体验设计方向课程的教学，并致力于把产品中的体验设计以及设计中的体验导向作为主要的研究和发展方向。创建的龙域设计（LOE DESIGN）团队为英特尔、松下、西门子等国际化制造企业提供以品牌为导向的产品设计和咨询等相关服务，并与华为、海尔、美的等几十家本土企业建立了产品设计与开发的合作关系。

Associate professor of College of design and innovation, Tongji University. Participate in product design and experience design course teaching, and is committed to product design experience and design experience oriented as the research and development direction of the main. Created Loe Design. Loe Design team provides product design and consulting services to brand such as Intel, Panasonic, Siemens, etc. Establish product design and development consulting cooperation with domestic manufacturing enterprises such as Huawei, Haier, Midea, etc.



## 谢春雷 / Chunlei Xie

上海工业设计协会理事

Director of Shanghai Industrial Design Association

2008年创立上海岸峰工业设计有限公司，岸峰致力于以工业设计为核心的系统化产品创新服务。为客户提供专业的产品战略、用户研究、PI系统整合、外观设计、结构设计等创新支持。2013自主设计生产的高尔夫产品荣获德国IF工业设计奖。成为全球第一家在该领域荣获此奖项的中国品牌。

*Founded Shanghai A-Four Design Co., Ltd. in 2008. A-Four Design is devoted to industrial design as the core of the system of product innovation service. A-Four Design provide professional product strategy, user research, PI system integration, design, structure design, innovation and support to customers. Independent-designing production of golf products won the German IF Industrial Design Award in 2013. To become the first China brand winning this award.*



## 张展 / Zhan Zhang

上海第二工业大学应用艺术设计学院院长

Dean of Applied Arts and Design College  
Shanghai Second Polytechnic University

专注工业设计教育和实践二十余年，在中国工业设计还处于萌芽时期，是最早运用系统的工业设计理论全面服务传统制造业进行创新设计、品牌建设、提升核心竞争力，使企业走向世界的践行者。

*Focus on industrial design education and Practice for more than 20 years. Is the earliest use of industrial design theory system of comprehensive service of traditional manufacturing industry innovation design, brand building, enhance the core competitiveness of enterprises to the world.*

# 2014 CHINA CYCLE

## 创新产品 评选金奖 获奖名单

## GOLD MEDAL LIST OF 2014 CHINA CYCLE CREATIVE PRODUCT SELECTION

### 获奖企业

捷安特（昆山）有限公司

美利达自行车（中国）有限公司

深圳市德酷驰贸易有限公司

西班牙BH中国分公司

美林自行车国际贸易有限公司

维豪车料股份有限公司

厦门鸿基伟业复材科技有限公司

大亚链条股份有限公司

广州经济技术开发区卜威工业有限公司

昆山拓步户外运动用品有限公司

### 获奖作品

捷安特顶级空气力学公路车

美利达山地车

GHOST 山地车

铁三 / 计时车

风炼可旋转折叠自行

一体式碳纤维鞍座座杆

碳纤维组合式车架

冲刺型轻量公路赛链条

超异型铝合金车架

嵌入式运动光学太阳镜

### THE AWARD-WINNING ENTERPRISES

GIANT (KUNSHAN) CO., LTD.

MERIDA BIKE (CHINA) CO., LTD.

GHOST CHINA TRADING CO., LTD.

BH BIKES CHINA

MAYLIN BICYCLE INTERNATIONAL TRADE CO., LTD.

CONTROLTECH

XIAMEN HONGJI WEIYE INDUSTRIAL CO., LTD.

TAYA CHAIN CO., LTD.

KINESIS INDUSTRY CO., LTD.

KUNSHAN TOPEAK SPORTS OUTDOORS CO., LTD.

### THE AWARD-WINNING PRODUCTS

Propel Advanced SL 0 ISP Road Bike

Merida MTB

GHOST RIOT 9 Mountain Bike

BH Triathlon Bike

FSIR Spin Bike

AFFILADO

Carbon Combined Frame

Aero Lightweight Bicycle Chain

KINESIS TM520 XC

RX Sports Sunglasses

# 01

## 捷安特顶级空气力学公路车

捷安特（昆山）有限公司

### PROPEL ADVANCED SL 0 ISP ROAD BIKE

GIANT (KUNSHAN) CO., LTD.

这款车是当前世界上最快的空气力学公路车，在职业自行车赛事中拿下过多次冠军。这款车用职业竞赛等级的碳纤维材质车架以空气力学成型技术设计而成，经第三方风洞试验验证，在所有转向角度上与同类产品相比，更具空气力学效益，在时速 40 公里骑行的测试下，较其他公路车快 12-36 秒。这款车使用捷安特专属的 SpeedControl SL 刹车系统，既有空气力学优势又有强劲的制动力，整合了一体式座管及内走线配置等技术。

*The aero road choice Giant Pros including of Marcel Kittel, designed in the wind tunnel, proven at the Tour De France. The Advanced SL-grade composite frame is engineered with AeroSystem Shaping Technology, which saves 12-36 seconds over a distance of 40km at a speed of 40 kph compared to key aero bike competitors-with zero compromises in weight or stiffness. Add technologies including the SpeedControl SL brake system, integrated seatpost and internal cable routing and the result is clear: Propel Advanced SL is faster from every angle.*



展位号 / [2]B1220

# 02

## 美利达山地车

美利达自行车（中国）有限公司

### MERIDA MTB

MERIDA BIKE (CHINA) CO., LTD.

这款车拥有 27.5 寸的大轮组，随着轮径加大带来的低胎压、高循迹性优势，让这辆车在极为崎岖的越野林道中，能展现出不可思议的操控灵敏度。车架几何经过微调，后三角经过重新设计，后下叉达到 440 毫米，比上一代多出 5 毫米，能增加上坡时的抓地力，在下坡时，操控则能更顺畅稳定，同时，又能保有一定水平的灵活度，衔接立管与后下叉的避震转点也重新计算过，避震性能再升等一个档次，后三角可安装 2.35 寸的宽胎，并与车架保持 1 厘米的间隙空间，另外，因上管长度稍微增长，全车系搭配 45 毫米短龙头，以及 760 毫米的超宽把手，取得全方位的操控平衡。

*This bike replaced by 27.5 inch wheel group, with the wheel diameter increased to bring low tire pressure, high tracking of advantage. Merida fine-tuning the frame geometry, ONE-SIXTY rear triangle is redesigned, the rear lower fork than previous generations of more than 5mm to 440mm, can increase the grip in the uphill, downhill, manipulation is more smooth and stable, at the same time, and can maintain a certain level of flexibility; cohesion riser and post fork shockproof turning point also re calculated the shockproof performance, then promoted a grade; after the triangle can be mounted 2.35 inches wide tires, and maintain the clearance space of 1 cm and a frame. In addition, because the pipe length increased slightly, the entire car line with 45mm short tap, and 760mm ultra wide hand, achieve balance control a full range of.*



展位号 / [2]D1201

# 03

## GHOST RIOT 9 山地车

深圳市德酷驰贸易有限公司

### GHOST RIOT 9 MOUNTAIN BIKE

GHOST CHINA TRADING CO., LTD.

此款车使用创新的 RIOT-Link 专利技术，这不仅在自行车工业中树立了标杆，更为后避震带来了一场革命。RIOT-Link 系统可以让骑行者比以前任何时候骑得更快，体验前所未有的操控感，也使得骑行更加安全。从技术上说，RIOT-Link 是一种在两侧均受压的浮动机械避震系统，上下连杆连续的相互作用是产生极致运动性能的关键，在上方连杆高效控制前 80% 行程的同时，随着冲击加大下方 RIOT 连杆，为后 20% 提供效果最佳的打底保护。

*The innovative and patent-pending RIOT-Link not only represents the new benchmark. In the bicycle industry, it is a revolution in terms of rear suspension. It provides a completely new experience on the trail, because the RIOT-Link system allows you to ride faster than you ever did before, and the unprecedented control makes every ride safer. While the upper rocker controls the first 80% of the travel efficiently, the lower RIOT-Rocker progressively takes over as travel progresses, and provides optimum bottom-out protection during the last 20% of travel. This unique combination results in a whole new performance level.*



展位号 / [3]B0622

# 04

## BH 铁三 / 计时车

西班牙 BH 中国分公司

### BH TRIATHLON BIKE

BH BIKES CHINA

此款车使用 Aerolight 车架，由 BH 与 Eneko Llanos 为了达到空气动力最佳表现而共同开发设计，Aerolight 车架运用了科技与百年工业技术而打造出的车架，以突破性的创新与精密工业研发过程，使车架的各部位车管得到更优化、更精准的厚度，同时使用了最好的碳纤维材质，让成型技术上达到刚性与轻量的并重。使用全球最新 BB386EVO 五通系统，尺寸增加到 86.5mm 的宽度，获得了更强的扭转刚性并增加了踩踏顺畅度，并且，后下叉空间可以搭配各式的轮组系统。符合空气动力的座管造型设计，使座垫能调整出等同于 74~78 度的角度，使骑乘者得到更舒适放松的骑行姿势。头管上下皆采用 1-1/8 英寸的设计，以达到更窄、更低、更流线的造型。

*The Aerolight frame, developed jointly by BH and Eneko Llanos, was designed to slice the wind...reaching high speeds, exploding across flats and efficient ascends. This proprietary manufacturing process uses a combination of high and medium modulus materials in order to attain the high standards demanded by BH, BH oversized the bottom bracket in order to incorporate the BB386EVO system, which ensures greater torsional stiffness and increased rider efficiency. This innovative design allows the width of the external bottom bracket to be increased to 86.5 mm, providing greater flexibility to produce a superior frame design. The aerodynamic seat tube design, allowing for a seat angle of between 74° and 78° allows the rider to adopt a more relaxed or more aggressive positioning. The headtube design is built around an 1-1/8" bearing both at the top and bottom race. It has been manufactured in a narrow, stylized shape in order to offer the frame a more aggressive, aerodynamic form.*



展位号 / [3]C0912

# 05

## 风烁可旋转折叠自行

美林自行车国际贸易有限公司

### FSIR SPIN BIKE

MAYLIN BICYCLE INTERNATIONAL  
TRADE CO., LTD.

此款车按人体工艺学设计车身，外形简洁美观，骑行舒适。颠覆了传统折叠车的设计，无折叠器，从而消除传统折叠车的折叠器带来的间隙，以及并由此间隙带来的卸力现象。此款车通过权威 EN 标准测试，强度高、刚性高。采用免绞中管技术，增加了中管的强度，也增加了座管跟中管配合的顺畅度。此款车采用超轻定向座管。

*It fundamentally eliminates the gap problem that can not avoid on the traditional folding bicycle which can cause the caused by the gay without the folding device so that reduced the folding accessories at the same time it reduced the weight of frame let it more lighter but stronger. It takes an innovative way of using rotating folding structure and solvent the problem of folding bicycle. Have good strength and have pass the EN standard test. FSIR seat post used the unique direction-fixed technology It do not need to just the seat post to fix the saddle direction.Only directly insert the seat post and the saddle direction are fixed,Meanwhile the accentric design of seat post enhance the thickness of either side of the post tube to improve the strength and also reduce the weight the same time.*



展位号 / [3]D0117



# 06

## 一体式碳纤维鞍座座杆

维豪车料股份有限公司

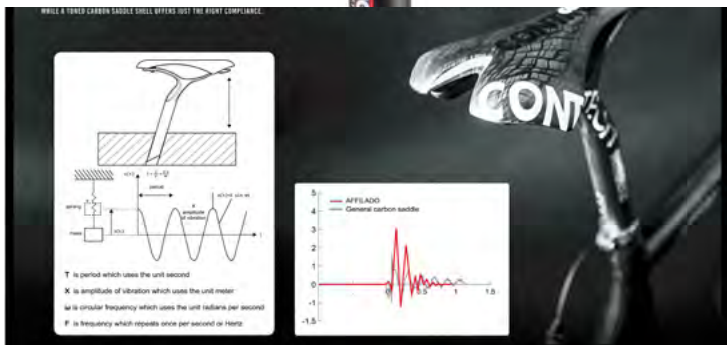
### AFFILADO CONTROLTECH

# Affilado



重量仅有 258 克，比一般市面上的碳纤维鞍座及坐杆轻至少 50 克以上，简洁利落的整体设计，保留原本功能的基础上，还可以上下及前后调整角度。新款的创新设计更具有吸震效果，在长途骑行时也非常舒适。产品通过 CEN 机器及职业车手道路测试。

*A one-piece construction means feathery light weight and a connected feel to the chassis while a tuned carbon saddle shell offers just the right compliance. Weighs only 258 grams, compared with the general market carbon saddle shell is light at least 50 grams, you can also adjust the angle. The new innovative design is more shock-absorbing effect, in the long-distance riding is very comfortable.*



展位号 / [3]D0112

# 07

## 碳纤维组合式车架

厦门鸿基伟业复材科技有限公司

## CARBON COMBINED FRAME

XIAMEN HONGJI WEIYE INDUSTRIAL CO., LTD.

这款组合式车架造型美观大方、精小强悍，具有多变速系统，使骑行更加省时省力，并且安全舒适。打破传统车架的一体结构，采用分体结构设计，采用更高的精密配合代替整体式车架结构尺寸上的要求。采用几何结构设计，使坐管、立管高度可调节（0-150 毫米），可满足不同身高的人使用，也可通过变速档，提升骑行输出比，提升骑行速度。碳纤维复合材料的力学性能优势及铺层结构的设计优化，使得该产品的重量降到极致（约 1.5 千克），同时，也让该款产品更容易生产、加工，质量更容易控制。



*The shape of the combined frame is beautiful and generous, small but strong. Its design of multiple shifting systems makes the riding more and more save time and labor, that also makes the riding safe and comfortable. The frame's geometry structure design makes the height of seat-tube and stem adjustable(0-150mm), so it can be used to meet people with different height. In combination with product parts' structure design and performance advantage of carbon fiber composite material, through the finite element stress analysis of carbon fiber composite material layer to calculate the preferred plan for the products' strength design, and gets the lightest weight design to make the lightest complete bike(1.5kg).*

展位号 / [3]B0719

# 08

## 冲刺型轻量公路赛链条

大亚链条股份有限公司

### AERO LIGHTWEIGHT BICYCLE CHAIN

TAYA CHAIN CO., LTD.

此款产品拥有突破性的核心技术，采用共生结构，彻底解决 5%~8% 高速磨耗所产生能量散失的问题，增强了踩踏力量传递带来减重、骑行效能的增加。采用空气力学立面设计，除了帮助逆风引导气流外，其纵深层次造型，为严谨工艺增添了活泼律动的外观。结构上融合了多项创新理念，储油润滑沟槽、360 度 T 字铆合、类钻膜硬化处理等，安全无死角，与紧配零件无声运转。

*This product has a breakthrough core technology, EL chain with advanced rollerless structure creates 15% unprecedented weight reducing comparing with current roller chains, which can save 56,989 tons of carbon emissions each year. Open up TAYA green vision for next decades. T pin is designed to overlap the side plate hole so that the riveting strength can increase over 250kgf, and Diamond Hard Treatment provides the 10% extra reliable on chains.*



展位号 / [3]A0907

09

## 超异型铝合金车架

广州经济技术开发区卜威工业有限公司

**KINESIS TM520 XC**  
KINESIS INDUSTRY CO., LTD.

此款产品使用四支 SPF 管件制造：上管，下管，中管和上叉，凭借强大的上管、下管和中管五通端的扩大造型，除提供高刚性外也带来了具有吸引力的外形。隐藏式走线使得此款产品看起来更干净。扁平的一体式上叉设计，可以吸收震感，提高骑行的舒适感。

*This frame we use four SPF tubing to build: top tube, down tube, seat tube and seat stay. With strong top tube and down tube which provides high stiffness also brings an eye-catching shape, and internal cable routing makes it look clean; flat seat stay is our new design. This design can absorb the vibrations, it will make you feel comfortable when riding.*



展位号 / [1]A0713

# 10

## 嵌入式运动光学太阳镜

昆山拓步户外运动用品有限公司

### RX SPORTS SUNGLASSES

KUNSHAN TOPEAK SPORTS  
OUTDOORS CO., LTD.

这是一款专为近视的户外运动爱好者所设计的多功能运动眼镜，它既具备运动眼镜功能，又具备了光学眼镜的功能。其镜片由内嵌光学镜片和外圈太阳镜片组合而成，其中内嵌光学镜片采用了个性化定制，引入了世界光学巨头德国施耐德的运动光学镜片生产技术，外圈镜片采用抗冲击的运动眼镜镜片。在生产工艺上，此款产品采用嵌入式生产技术，在光学镜片上开设凹槽，在太阳镜片上开设凸隼，最后把二者组合。此款产品具备超强抗冲击和防刮耐磨等优越性能，配合德国施耐德最新运动视光系统，完美解决了传统镜片与大弧度镜架结合所造成的视觉影像扭曲与模糊，让大基弯镜片与高弯度镜架得到完美融合，充分发挥专业运动功能眼镜的作用。

*Topeak Sports RX sports sunglasses embedded optical sports sunglasses is a multi-function product for myopic sports lovers. It has both sport and optical function. The lenses are integrated by embedded optical lens and outer sunglasses lens. The embedded lens is individually customized by the technology of optical giant Schneider, and the outer lens is normal sunglasses lens. As for manufacturing technique, our company develops embedded technology: slot grooves in optical lens, carve bayonet on sunglasses lens, and finally combine them together. The highly anti-impact and anti-scratch advantages, coordinated with Schneider newest optics system, solve the distortion and unclear vision problem caused by the combination of normal optical lens and high base frame, giving full play to the professional sports sunglasses role.*



展位号 / [4.2]D0112

# 2015 CHINA CYCLE

## 创新产品 评选 创新奖 获奖名单

### CREATIVE AWARD LIST OF 2014 CHINA CYCLE CREATIVE PRODUCT SELECTION

#### 获奖企业

#### 获奖作品

广州凯路仕自行车运动时尚产业股份有限公司	便携式单边折叠车
苏州达方电子有限公司	智慧电动辅助
青岛濠骏达商贸有限公司	F16 三折叠车
昆山鑫振发商贸有限公司	低风阻冲刺公路车
欧亚马自行车(太仓)有限公司	360度折叠锁紧系统
成格商贸(上海)有限公司	自行车前灯暨头盔灯
苏州天健竹业科技有限公司	奔步竹制自行车
东莞市拓顶体育用品有限公司	全折叠调整式儿童座椅
山东泰山瑞豹复合材料有限公司	全碳变速互换计时车
太平洋自行车股份有限公司	REACH 小径折叠车
佛山市顺德区跨速头盔有限公司	多功能可拆分运动头盔
深圳市鸿富体育用品有限公司	场地 TT 车
中山喜玛拉雅塑胶制品有限公司	冬日暖泉
佛山市顺德区均安镇富山自行车配件有限公司	可调式气囊自行车鞍座
中策橡胶集团有限公司	超轻量 TLR 雪地胎
美诺华(深圳)特殊印刷科技有限公司	隐水标
凯得爱依安全运动器材(太仓)有限公司	RAPID X
元渝机械(深圳)有限公司	座杆
捷安特(昆山)有限公司	女性健身美型平把跑车
超汇桂盟传动(苏州)有限公司	X10 环保防锈链条
深圳偶地运动科技有限公司	智能防盗把立
江苏杰凯化工有限公司	冷光漆
上海宝骑儿童用品有限公司	自行车前座 BQ-10
维格车料(昆山)有限公司	下坡车卡式踏板
昆富工业股份有限公司	铝合金车顶平台携车架
镇洋兄弟单车公司(镇洋自行车行)	Super 2R 头盔
深圳市宏祥利科技有限公司	快拆折叠式自行车车把
建大橡胶(中国)有限公司	全能型胖胎
杭州兰帕达体育用品有限公司	甲冑防风保暖骑行服
舍弗勒贸易(上海)有限公司	自动变速执行器
义乌市唯路体育用品有限公司	自行车智能手机架
美利达自行车(中国)有限公司	美利达公路车
久钰车料(昆山)有限公司	FLOWTRAIL
深圳市鸿富体育用品有限公司	轻量版公路车
苏州杰翔电动车有限公司	电机电池电控一体化轮
厦门森地客户户外用品有限公司	男款短袖骑行服上衣
凯得爱依安全运动器材(太仓)有限公司	CC-PA500B
北京奥易绿野车用装备有限公司	超轻防风雨骑行夹克
宁波力盟机械有限公司	BMX 内置回转器

# 2015 CHINA CYCLE

创新产品  
评选  
创新奖  
获奖名单

CREATIVE  
AWARD  
LIST  
OF  
2014  
CHINA CYCLE  
CREATIVE PRODUCT  
SELECTION

## THE AWARD-WINNING ENTERPRISES

CRONUS CO., LTD.

DARFON ELECTRONICS (SUZHOU) CO., LTD.

QINGDAO HONEST COMMERCE & TRADING CO., LTD.

SHAKELAND (KUNSHAN) BAG CO., LTD.

OYAMA BICYCLES (TAICANG) CO., LTD.

INFINI CO., LTD.

SUZHOU TIANJIAN BAMBOO TECHNOLOGY CO., LTD.

Coopeak Co., Ltd.

SHANDONG TAISHAN RUIBAO COMPOSITE MATERIAL CO., LTD.

PACIFIC CYCLES INC.

SHUNDE MOON HELMET CO., LTD.

HONGFU SPORTS EQUIPMENT CO., LTD.

HIMALAYA OUTDOOR PRODUCTION CORP.

FUSHAN BICYCLE UNITE CO., LTD.

ZHONGCE RUBBER GROUP CO., LTD.

M-NOVA (S.Z) SPECIAL PRINT CO., LTD.

CATEYE (TAICANG) CO., LTD.

YENYUE INDUSTRIES (SHEN ZHEN) CO., LTD.

GIANT (KUNSHAN) CO., LTD.

KMC TRANSMISSION (SUZHOU) CO., LTD.

SHENZHEN ODIER SPORTS TECHNOLOGY CO., LTD.

J&K CHEMICAL INDUSTRIAL CO., LTD.

SHANGHAI BAOQI BABY GOODS CO., LTD.

WELLGO CYCLE ACCESSORIES (KUNSHAN) CO., LTD.

KING ROOF INDUSTRIAL CO., LTD.

CHUNGYANG CYCLE CO., LTD.

3H TECHNOLOGY CO., LTD.

KENDA RUBBER (CHINA) CO., LTD.

HANGZHOU LAMBDA SPORT CO., LTD.

SCHAEFFLER TRADING (SHANGHAI) CO., LTD.

YIWU WELLOO SPORTS GOODS CO., LTD.

MERIDA BIKE (CHINA) CO., LTD.

JOY CYCLE PARTS (KUNSHAN) CO., LTD.

HONGFU SPORTS EQUIPMENT CO., LTD.

SUZHOU JIEXIANG ELECTRIC BICYCLE CO., LTD.

SANTIC (XIAMEN) OUTDOOR CO., LTD.

CATEYE (TAICANG) CO., LTD.

ADVENTURE OUTDOORS CO., LTD.

NINGBO POWER INDUSTRY CO., LTD.

## THE AWARD-WINNING PRODUCTS

Portable Folding Bike

Pedal-Assisted Bike-CF1

F16 Folding Bike

Dare Vsr Aeroroad

360° Lock System

Super Lava I-263p Helmet Mount

Bamboom Bamboo Bicycle

Sirius

Timing Bicycle

Reach

Multi-Function Sport Helmet

Trial Time Frame

Heating Bag

Fu-5100air.Saddle

Superlight Tlr Fat Tire

HWT (Hide Water Transformer)

Rapid XTl-Ld700

LEV CI

Aimez Comax

X10 Eco Proteq Technology Chain

Smart anti-theft stem

Lumi

Baby bicycle seat BQ-10

XGF04

Roof Mounted Bike Carrier

Super 2R Helmet

Quick release folding handlebar

JUGGERNAUT Pro/ Sport Tire

Armor windproof cycling suits

Velomatic Shift Actor

Power Plus Mount

Merida Road Bike

Flowtrail 27.5

Super Light Road Frame

Integrated Wheel

Men's Cycling Jerseys

Padrone Smart CC-PA500B

Tech Lt Jacket

BMX Internal Rotor System



## 便携式单边折叠车

广州凯路仕自行车运动时尚产业股份有限公司

### PORTABLE FOLDING BIKE CRONUS CO., LTD.

该折叠车前后轮皆采用单边支撑，前后轮支撑左右错开，保证折叠后前后轮轮毂轴心相对，轮胎边缘紧贴。前叉设置折叠结构，折叠时前轮旋转到车架主管下方，后轮采用碰合式旋转开合结构，折叠时亦旋转于车架主管下方，两轮对心贴齐，折叠后整车成四方状，座管可下插着地，整车可站立并拖行，其折叠后轴向宽度略大于两轮宽度之和，以 16 寸车为例，折叠后体积约为 550mm \*520mm\*200mm，是目前全球同规格折叠车里面折叠后体积最小的。

*The folding bike with portable light weight and be unilateral is suitable for urban commuters, which use front and rear all adopt unilateral stays that stagger around, it ensures front and rear wheel axis be centre line, the edges of wheels cling after folding. For example 16" folding bike, the size after folding is about 550mm\*520mm\*200mm, it is the smallest size in the same spec.*



展位号 / [3]A0722



# 12

## 智慧电动辅助

苏州达方电子有限公司

### PEDAL-ASSISTED BIKE-CF1 DARFON ELECTRONICS (SUZHOU) CO., LTD.

该款车极简、一体成形、低跨点设计让骑乘更方便、更安全。搭配钻石型整合式车头灯，电池巧妙地藏于坐管内，加上 BESV 独家专利 Algorithm 动力驱动系统，与媲美 Porsche 911 的超跑驾驭感；BESV 生产的每一辆智慧电动助力自行车皆搭载了由 BESV 专业团队共同研发的动力驱动系统 - Algorithm，可精确算出驱动系统所需要动力，再根据踩踏需求输出最佳马力，这项独特的科技让您在脚踏与动能辅助之间能流畅平顺地转换、不暴冲。

*The BESV Cat CF1 pedal-assisted e-bike features a sleek design and its step-through aluminum frame allows better safety and convenience. Cat CF1 is equipped with integrated diamond-shape headlight and battery is hidden in the frame to make it look simple and fashionable. BESV's proprietary Algorithm power drive system allows Cat CF1 smooth and easy ride and it's suitable for the elders, women, even everyone in the family. The proprietary, custom-built power drive system, Algorithm, is integrated into every BESV e-bike. Fine-tuned by our team of software experts, Algorithm calculates the power needed by the drive system and delivers optimal performance whenever it is required.*



展位号 / [4.1]D0409

# 13



## F16 三折叠车

青岛濠骏达商贸有限公司

## F16 FOLDING BIKE

QINGDAO HONEST COMMERCE & TRADING  
CO., LTD.

该款 F16 三折叠车，被誉为：“横竖都能折”的通勤利器。这是一款具有 16”小径的最新专利三折叠车，它折叠后体积轻巧（530mm\*340mm\*620mm），可方便的存放于（如便利商店、火车站、机场）的中型储物柜中，很轻松、自在伴你出行。特殊车体设计使用者以轻松斜躺的姿势骑行，骑行中双脚可以随时着地，安全感倍增。配备有 40T 的齿盘配上后飞 12~28t，很适合于悠闲的单车旅行。

*Traveling with the new KHS F16 Manhattan is a breeze. With 16" wheels and 3-folds, it folds up into a small package of 530mm\*340mm\*620mm – small enough to be placed into medium storage lockers at super market, train station, or airport. The frame utilizes a semi-recumbent geometry, allowing the rider to easily and safely touch the ground. With front chain-ring of 40T and rear flywheel of 12~28T (8-speed), it is suitable for relaxing 2-3 day travel ride.*

展位号 / [2]D1213

# 14

## 低风阻冲刺公路车

昆山鑫振发商贸有限公司

### DARE VSR AEROROAD

SHAKELAND (KUNSHAN) BAG CO., LTD.

该款车使用独家 MS-HMC 碳纤技术达到轻量化与刚性兼具。VETOX 整合式设计将 VSR 车头碗组 / 双重刹车系统 / 座管夹器 / 电子变速走线融合空气力学概念全部模块化设计。AIH 设计同时整合了机械式走线以及 DI2 电子走线孔位，独特的鹰嘴造型提供最佳的破风性。DARE 植入最新车架设计元素，在立管 - 下管 - 左后叉导入不对称的设计，所有踩踏力量 100% 传导至后轮，提供迅速直接的加速力！刀锋式吸震后上叉将风阻减至最低，同时可带来不可思议的骑乘舒适性！

*The headset cap combine with mechanical cable inlets and DI2 compatible, especially turn the handlebar the headset cap still keep aerodynamic shape. Special head-tube shape integrated with fork design, guide wind separate to side of frame smoothly. VSR one frame have two brake system option, disc brake or Shimano direct mount hiding BB aerodynamic brake. For different brake system, special exchangeable dropout design fit 130mm or 135mm hub. The dropout combines with rear mechanical cable inlets and DI2 cable compatible. Asymmetric BB design with super big volume in order to achieve best stiffness to weight and paddling power transfer. Aerodynamics seat post with adjustable seat tube angle 73~77 degree, 77 degree for Triathlon geometry.*



展位号 / [N]1023

# 15

## 360 度折叠锁紧系统

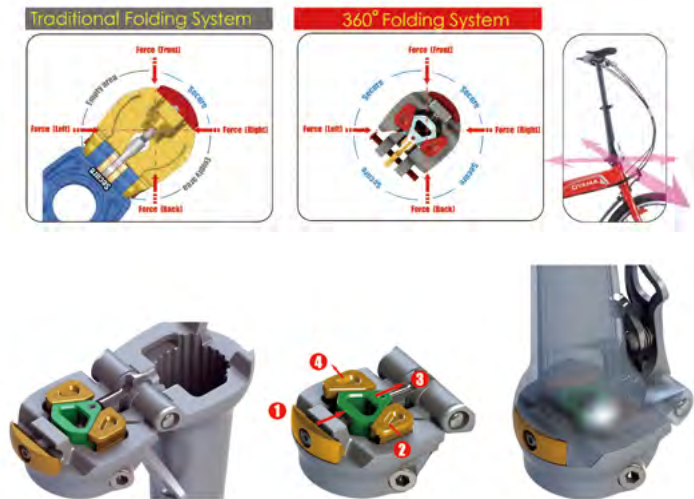
欧亚马自行车（太仓）有限公司

## 360° LOCK SYSTEM

OYAMA BICYCLES (TAICANG) CO., LTD.

新形的 360 度锁紧系统折叠机构，有别于现行市场上所有的两面锁紧折叠机构，将锁紧的面积最大化以达到折叠立管的最佳的骑行稳定效果当快拆进入锁紧位置时，中央滑块同时带动左右两个锁紧滑块和中心锁紧卡块同步移动锁紧。只要一个动作，就可以实现上下关节前、后、左、右的 360 度全方位锁紧动作，大大的提升了锁紧面积和整体的配合强度。满足一般折叠装置无法达到的稳定效果。

*Change the locking direction from traditional 2 directions secured to 4 directions, to enlarge the locking surface and increase the stability of the folding stem. When push the lever to security position, the shape of the center lock slider will automatic carry out the left & right lock sliders together into locking position. Only 1 action, it will secure the front, back, left and right directions together, to fulfill the 360° locking request and greatly covers the empty area, which could not be guarantee before.*



展位号 / [2]D0723

# 16

## 自行车前灯暨头盔灯

成格商贸（上海）有限公司

### SUPER LAVA I-263P HELMET MOUNT

INFINI CO., LTD.

该款车拥有 300 流明光源输出，搭配铝合金灯头提升散热效率，内建锂聚电池安全又环保。采用独家光学技术配光，调整了中心点亮度的位置，使光线照射距离更远符合使用者需求，并增加侧光补强，成就远方照明及侧光的超广视角。尾端 USB 盖采防水防尘设计，并增添弱电指示能更弹性调整亮度模式。另有专属安全帽支架，可依照使用者习惯使用。

*Super Lava is a compact, eco-friendly rechargeable headlight, which can emit up to 300 lumens output. Its Aluminum Alloy light cap is created with the notion of the efficient thermal design to disperse the extra heat. Super Lava features the unique optical lens, designed with the idea of user vision. We lift its spot's projection angle to provide the much-needed illumination for the users, and also enhance the side visibility. Furthermore, the low battery indicator gives consumer more flexible ways to adjust the lighting mode. In addition, this water resistant light is equipped with a tool free bracket, and can be mounted on handlebar and helmet.*



展位号 / [4.2]A0722

## 奔步竹制自行车

苏州天健竹业科技有限公司

**BAMBOOM BAMBOO BICYCLE**  
SUZHOU TIANJIAN BAMBOO TECHNOLOGY  
CO., LTD.

奔步绿色环保竹制运动自行车，选用可再生资源——竹子为原料，经过蒸煮 - 展平 - 辊压 - 刨削加工 - 干燥 - 胶合加工 - 组坯 - 热压卷制成型等精密的工艺手段卷制成精密竹皮卷管部件，与轻量高强度合金部件组合而成。奔步在竹制运动自行车设计方面充分考虑人体力学，结合了人的体格、体力等人体因素，具有安全、轻便、时尚、简约的特点。奔步竹制自行车，是世界首创的竹皮卷管自行车，将竹子的环保、美观、硬度、韧性完美地融入自行车的生产工艺。相比手工原竹竹管自行车，奔步竹皮卷管自行车具有明显的产业化优势。竹制自行车的产业化生产将引领自行车发展的未来趋势。

*BAMBOOM bamboo bicycle, use of renewable resources, bamboo as raw material, after cooking - flattening - rolling - cutting machining, drying, gluing - set of billet - hot-rolling into pipe fitting, it will be combined with high-strength lightweight alloy components. BAMBOOM bamboo bicycle design fully considered the human body mechanics, combined with the people's physique, physical factors such as the human body, has the characteristics of safety, lightweight, fashion, contracted. BAMBOOM bamboo bicycle is the world's first bamboo-skin-roll-tube bicycle. Compared with the original bamboo bicycle, BAMBOOM bamboo bicycle has obvious advantages of industrialization because of the perfect combination of bamboo processing and bicycle design, the company incorporates the environmental, beautiful, strength and toughness of bamboo into bicycle industrialization. Industrialization production of bamboo bicycle will lead the future development trend in the bike.*



展位号 / [2]A1016



# 18

## 全折叠调整式儿童座椅

东莞市拓顶体育用品有限公司

### SIRIUS

Coopeak Co., Ltd.

意大利原产的 Okbaby 儿童座椅系列里 sirius 款式是市面上唯一一款可以：调整靠背角度、前后距离可调，并且整个座椅可以折叠起来塞进汽车后备箱。快速安装在座管上的扣具，附带安全密码锁，在便于快速安装座椅同时，又能保证产品的安全。1、背部附带反光板，增加夜间骑行安全；2、每个儿童座椅都有一个全球唯一序列号，可以追溯到产品生产时情况：如果原理采购公司、生产时间、生产批次等等，确保产品可以持续跟踪；3、防水、防尘、防紫外线、防烫屁股的坐垫设计；4、背部通风孔散热设计；5、肩带不止是长度可以调节，高度也可以调节，配合可调节的脚踏板，可以适合不同身高的儿童。

*Italian origin okbaby sirius style child seat in the series is the only one available in the market can: backrest angle adjustment, adjustable from front to back, and the entire seat can be folded up into a car trunk. 1/ The back comes with reflectors to increase riding safety at night; 2/ Each child seat has a globally unique serial number that can be traced back to when the product: if the principle of purchasing companies, production time, production batch, etc., to ensure that the product can keep track of; 3/ Waterproof, dustproof, anti-UV, anti-hot ass cushion design; 4/ Back vents thermal design; 5/ More than the length of the shoulder strap can be adjusted height can also be adjusted, with adjustable pedals, can fit children of different height.*



展位号 / [4.2]B0112,D1412

# 19

## 全碳变速互换计时车

山东泰山瑞豹复合材料有限公司

### TIMING BICYCLE

SHANDONG TAISHAN RUIBAO  
COMPOSITE MATERIAL CO., LTD.

2015 自主研发全碳机械 / 电子变速互换计时车，经过设计师独特工艺设计推出此款新产品，既能搭配经济实用的机械式变速器又能搭配专业发烧级电子式变速器产品。车型整体感觉流畅、简洁、外观典雅。让每一位车手充分享受骑行快感，打造具有侵略性的赛事利器。此款产品在 3D 设计时注重流体力学，反复进行专业严谨的风动测试，确证产品结构力学下极力减少迎面风阻；具有最佳的强度、刚性及流体力学的专业设计；并采用空翼环氧树脂体系、高模量碳纤维结合的碳布进行制作，成为长途耐力骑乘和瞬间冲刺的比赛利器。

*2015 independent research and full carbon mechanical / electronic timing gear swap car, after the designer designed a unique process with this new product launch to match economic and practical mechanical transmission and collocation of "professional" electronic transmission products. This model overall feeling smooth, simple, and elegant appearance, which is designed with focus on 3D fluid dynamics, repeated rigorous professional pneumatic testing, validation of product structure mechanics head under strongly reducing wind resistance; With the best professional design strength, rigidity and hydrodynamics; and the use of air wing epoxy resin system, combined with high modulus carbon fiber carbon cloth production, long-distance endurance riding and instantly become the sprint race weapon.*



展位号 / [3]C0917



# 20

## REACH 小径折叠车

太平洋自行车股份有限公司

**REACH**  
PACIFIC CYCLES INC.

REACH 是一台高性能小径折叠车，它以下的特性：

- 1、超群操控：增加抽车时车手的操控性及稳定度。
- 2、三角形车架：市面上唯一三角形车架及粗下管的折叠车，提供车架绝佳的刚性。
- 3、零动量转点：一体式后三角设计形成零动量转点，能量不流失，让踩踏更有效率。
- 4、20" 轮径 (451)：小轮径起步快、风阻小，提供绝佳的加速性。
- 5、舒适减震：优力胶避震提供舒适且真实的路感。
- 6、全新设计前叉：独特 trailing link 减震结合碟刹与四连杆杆下沉设计，大幅提升巡航稳定性。
- 7、快速可调式减震：全新设计的简易可调式前后减震，可提供多种减震模式、适应各种路况。



*REACH is a high-performance compact folding bike, it has the following unique features:*

- 1. Full size geometry: Increase side-to-side motion cycling steering control.*
- 2. Superior steering: The only folding bike with triangular rigid triangular frame: frame design and oversized down tube to achieve maximum frame rigidity.*
- 3. Zero momentum: Unified rear triangle keeps weight under the suspension creating zero power loss allowing maximum pedal efficiency.*
- 4. 20" wheels (451): Small wheels offers easier starting up yet providing fast and smooth acceleration with lower air resistance.*
- 5. vibration damping suspension: Full PU suspension smooth out bumpy terrains yet provides responsive feedback.*
- 6. new designed front fork: Revolutionary trailing link suspension design with disc brake system and 4-bar linkage anti-dive performance.*
- 7. Tool free folding: Offers 2 ways of folding, quick folding and complete folding, both simple and intuitive.*

展位号 / [3]D0024

# 21

## 多功能可拆分运动头盔

佛山市顺德区跨速头盔有限公司

### MULTI-FUNCTION SPORT HELMET

SHUNDE MOON HELMET CO., LTD.

由 MOON 设计团队设计的一款多功能可拆分运动头盔，是集一款自行车头盔，电动车头盔，滑雪头盔于一体的多功能运动头盔，主要部件有挡风镜，头盔主体，耳棉，遮风挡雨盖，安全警示灯，防冲击内衬；在 30 秒内可拆分挡风镜，遮风挡雨盖，耳棉，内衬，拼装完成骑行和滑雪功能模式之间的转换，结构简单，组装方便；遮风挡雨盖可更换其他颜色，既保证了头盔的安全性要求，又能让骑友们变换多种时尚色彩的选择，也让骑行和滑雪爱好者省去更换头盔的烦恼。

*MOON's design team, had designed a multifunctional, detachable sport helmet, which one combine the function of bicycle helmet, ski helmet and Electric car helmet. The helmet main parts are protective glasses, ear pads, safety indicator light, good lining pads. When face with the impact, the helmet can be change within 30 seconds by apart the glasses, ear pads, and the rain cover, through this way, then it can provide a good protection for your head. Bicycle and skiing enthusiast no need to change the helmets frequently. The lining pads can be change according to season changing, you are never worry about season changing anymore!*



展位号 / [4.2]D0122 [N]1217

# 22

## 场地 TT 车

深圳市鸿富体育用品有限公司

### TRIAL TIME FRAME

HONGFU SPORTS EQUIPMENT CO., LTD.

AVENGER TM6 产用更低风阻设计，经过空气动力学模拟测试造型车架，打造最佳空气动力横流截面设计，同时符合 UCI 的标准，整个车把跟车架的走线设计，采用完全隐藏的设计，您几乎找不到线，让车架更加的干净整洁美观，让空气动力学发挥到淋漓尽致。前叉的刹车设计我们产用完全隐藏的设计，同时后叉的刹车设计也完全的隐藏在底部，呈现出极致的低风阻设计，还能完美的兼容胖圈轮组的尺寸，倍增铁人三项选手的骑行效率，能完全体现在 TM6 上面，车架的轻量跟空气动力的双重优势表露无遗。

*AVENGER TM6 design capacity at lower wind resistance, aerodynamic simulation testing through modeling frame, to create the best aerodynamic flow cross-sectional design, but in line with UCI standards. The fork is used all hidden design, also the rear brake are hidden at the bottom, almost can't see the line, it show the Aerodynamic technology very beautifully.*



展位号 / [3]F0026

# 23

## 冬日暖泉

中山喜马拉雅塑胶制品有限公司

## HEATING BAG

HIMALAYA OUTDOOR PRODUCTION CORP.



加热背包与无味水袋结合，在低温户外环境下活动也能享用舒适温水，且不影响水质及入口味道，有鉴于市面上各式各样的水袋保温背包，却并无一款续航力高，且能自行加热的款式。

电控三段式加热开关，能自行选择加热温度，背包保温材料可持续保持水温，水袋特殊双料材质，加热时仍无异味，采用通过 CE 认证环保充电式电池。背包内与加热装置结合，达到蓄热保温效果，加热开关能随时选择所需的加热时间，不浪费电源。

*Heating backpack combines with tasteless water bladder allows hydrating with warm water during low temperature outdoor activities and does not affect the water quality and taste. In view of various insulation hydration backpacks in the market place, no one can last and can self-heating model. Three-stage electric heating switch allow choosing preferable heating temperature. Sustainable insulation backpack material keeps the water temperature warm. Special dual-material water bladder makes no odor when heated, CE approved environmental friendly rechargeable batteries is used.*



展位号 / [4.2]B0516

## 可调式气囊自行车鞍座

佛山市顺德区均安镇富山自行车配件有限公司

### FU-5100AIR.SADDLE

FUSHAN BICYCLE UNITE CO., LTD.

该款自行车鞍座使用防水 TPU 合成的黑色来卡布，中间车 CHAUNTS 商标织带，周边用 300 克的网布，保障了透气的良好性能，最重要的是坐垫使用了专利气囊，能够调节气压，可以根据自身的需求来调整坐垫的软硬度，坐垫底部同样采用了减震球设计。产品前两侧采用人体工学设计，骑行不会妨碍腿部发力，后侧的加宽设计，增加了受力面积，更好的支撑身体重量，有效减轻尾部疼痛和不适。

*Surface using advanced TPU lycra fabric which comfortable to wear. Quality goods sell quality guarantee. Both sides use breathable mesh cloth, dry and breathable. Most of all, this saddle is including a proprietary airbay which can adjust the pressure and hardness by yourself. Both sides in the front of the saddle is designed according to ergonomics that people will feel more comfortable in their riding .In addition we have widen the after pant of this saddle to increase the force area for support body weight reduce the pain and discomfort of the haunch.*



展位号 / [N]0935

# 25



## 超轻量 TLR 雪地胎

中策橡胶集团有限公司

### SUPERLIGHT TLR FAT TIRE ZHONGCE RUBBER GROUP CO., LTD.

朝阳轮胎以近 60 年的轮胎生产经验，一举攻克此难题，生产出尺寸为 26\*4.90 的超轻量化雪地车胎，宽度达到 120mm，是世界上最宽的雪地车胎！产品搭配 H5176 花纹，胎面中间纺锤形长花块，表面凹槽设计，保证强度与低滚阻，增加轮胎在沙地，湿地，崎岖地的抓地力，胎肩部纵向向花块交错排列，提供了优良的转弯抓地稳定性。整条轮胎仅 1360 克，降低重量近 50%。更为人称道的是朝阳轮胎创新的将已成熟的 TLR 准真空技术应用于此雪地车胎，赋予此产品新的生命。

*With the experience and expertise of nearly 60 years in tire production, Chaoyang perfectly solves the dilemma by producing the size of 26 \* 4.90 ultra-low weight snow tire. With a tread width of 120 mm, it is one of the widest snow tires in the world. With the pattern of H5176, this tire ensures excellent grip performance by ensuring strength and low rolling resistance with the design of long capitatus form of pattern blocks at the center of tread and grooves at the surface when used in sand, mud and off road conditions. The result is that the total weight has reduced 50% and weighs only 1360 gram and it could be completely folded to be carried easily.*



展位号 / [1]D0117, D0817



# 26

## 隐水标

美诺华（深圳）特殊印刷科技有限公司

**HWT (HIDE WATER TRANSFORMER)**  
M-NOVA (S.Z) SPECIAL PRINT CO., LTD.

此隐水标在直观下看到平常的图案与文字，但在遇水后，表面的颜色会变成透明，显露出底色或图案或文字，待水干燥后，将恢复表面的颜色图案，且适用于铝合金材质、钛合金材质、碳纤维材质…等金属基材，拥有很好的附着性以及变化效果，变化速度快，遮盖力强，能广泛的应用于自行车产业。此隐水标是一款运用最新的材质以及印刷技术高技术含量的产品。

*You just can see the pattern and content in the surface, but when put the sticker in the water, the surface will become the transparent and show the pattern and characters hidden in the bottom. When it try you just can see the original pattern. It used for aluminium, titanium, carbon and metal material have good adhesive and change color very fast can widespread used in the bicycle industrial. HWT is the most new materail and high technologic print product.*



展位号 / [1]A1022

# 27

## RAPID X

凯得爱依安全运动器材（太仓）有限公司

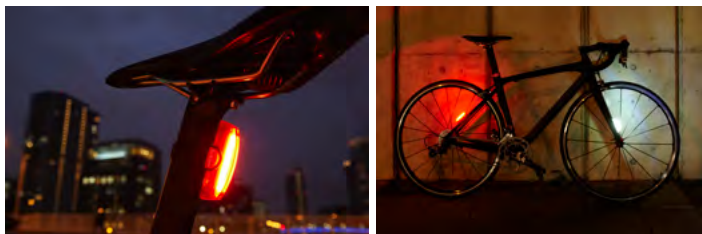
### RAPID X TL-LD700

CATEYE (TAICANG) CO., LTD.

Rapid 系列新一代问世，带来全新安全保障。面发光条（16 颗 LED）结合 Cateye 镜面技术实现最具流畅性外观设计和最亮全方位照射，实现全方位超级可见度的同时，通过脉冲模式等实现人性化设计。橡皮圈安装固定使拆卸简单易行，USB 充电（离聚合物电池）。六种模式（超亮 节能 闪烁 快闪 脉冲 爆闪），具有模式记忆功能。自动节电功能：当电量小于 20% 时，模式会自动切换到闪烁模式，且继续可以亮灯 1 个小时。安装在座管（水滴座管基本都可使用）、下叉、车把手、前叉等。



*Super visible from all angles and yet eye-friendly. Within 2 hours of charging time via Micro-USB. Battery indicator. Battery Auto Save. Flexible mounting. Seat Post (aero seat posts possible). Seat Stay. Compatible with most CatEye brackets (optional part Spacer X required).*



展位号 / [3]B0418



# 28

## 座杆

元渝机械（深圳）有限公司

### LEV CI

YENYUE INDUSTRIES (SHEN ZHEN) CO., LTD.

LEV CI 捕捉车轨中平稳作动的节奏并将其直接灌注、激发你的骑士魂。65mm 行程的作动空间已足以使你的骑乘超越巅峰。Carbon 大外管上一体式的出线设计，搭配超轻走线系统及 KGSL 轻量化线控—此结合与 KG 铝线控加标准拉线相互比较之下，整整减少了 50 克以上的重量。此设计使得整部车的线条极为干净简洁。LEV CI 新的拉线连接接口设计系统，使得座管在安装于车架上的情况下，使用者仍能容易的进行安装及维修清洁保养工作。获取专利设计的单向止逆轴承及进化版外管盖使得 LEV CI 作动平稳，即使骑行千里垂直顺畅度不会受到影响。

*LEV CI takes rhythm from the trail and injects it straight into your soul. 65mm millimeters of perfect drop are just enough to turn your ride up to eleven. A full unidirectional carbon mast routes our RECORSE ULTRALIGHT cable system directly through your frame to our KGSL lightweight remote – a combination saving over 50 grams compared to our KG ALLOY remote and standard shift cable. The result is clean lines for you and your bike. LEV CI's newly designed cable interface system is easier to setup and service while at the other end, a high compression-molded head connects LEV CI to your saddle.*



展位号 / [1]C1001

# 29

## 女性健身美型平把跑车

捷安特（昆山）有限公司

**AIMEZ COMAX**  
GIANT (KUNSHAN) CO., LTD.

Liv 作为全球首家打造全方位女性专属自行车的品牌，提供女性的单车全方位体验。Liv 结合施华洛世奇水晶的时尚元素，精心打造出动感时尚的健身美型公路跑车—Aimez CoMax，由 CoMax 碳纤维材质打造的轻量化车架以及高滚动性的 700C 轮组，让您恣意加速，穿梭蜿蜒公路间！潮款 Shimano 公路碟刹，灵活制动，尽享骑行速度与快感！Swarovski 水晶车首标，彰显 Liv 优越的 DNA！依照女性身材特点作为整车设计的依据，更加适合女性车友骑乘。

*Liv the first brand that specifically for women provide a comprehensive experience of riding. Combining the fashion elements of Swarovski crystal create the dynamic and fashion road bike – Aimez for the women riders. With an lightweight CoMax carbon frameset, and a fitness-oriented riding position for women, Aimez CoMax is an all-new flat-bar road bike for daily fitness riding and commuting equipped with fast-rolling 700C wheels and Shimano road bike disc brakes you can enjoy a smooth and efficient ride experience. The Swarovski crystal symbol of head tube showing the predominant DNA of Liv.*



展位号 / [2]B1220

# 30

## X10 环保防锈链条

超汇桂盟传动（苏州）有限公司

### X10 ECO PROTEQ TECHNOLOGY CHAIN

KMC TRANSMISSION SUZHOU CO., LTD.

2012年取得全球第一个链条产品碳足迹认证标章后，桂盟更加快环保产品开发脚步，EPT 环保防锈系列链条因此诞生。除了更高的防锈系数，桂盟领先业界的链条制造技术同时为 EPT 环保防锈系列链条带来最佳质量性能的优点。100% 可回收的绿色材料，加上“独家的高抗拉力高钢性材料技术”、“精密的模具和热处理技术”、“最佳变速及最佳兼容性结构设计”、“高嵌合力链轴铆合技术”等，让 EPT 系列链条具备环保、高效防锈、高强度、高耐磨耗、最佳变速效能、最佳传动系统兼容性等优点，为防锈链条立下新标准：绝佳防锈效能及链条传动表现。



*The primary attribute of Eco ProTeQ (EPT) Series chains is the significantly enhanced anti-corrosion/anti-rust coating with an added focus on a more eco-friendly manufacturing process. In addition to following all environment standards (RoHS, REACH, CPSIA, etc.), the new EPT treatment technology improves the chain protection by completely coating all the components to form comprehensive and durable anti-corrosion surface. Furthermore, by uniting 100% recyclable material with high tensile strength, high rigidity, energy-transfer technology, high-tech plate designs, and unsurpassed riveting geometry, KMC's leading technology allows EPT chains high pin power, high durability, and the best shifting performance. All of these advantages coalesce to give EPT chains the best anti-rust capabilities and optimal chain performance in the most adverse environments.*

展位号 / [2]C0701

## 智能防盗把立

深圳偶地运动科技有限公司

### SMART ANTI-THEFT STEM SHENZHEN ODIER SPORTS TECHNOLOGY CO., LTD.



智能防盗把立在首次使用时就和 ODIER APP 用户进行绑定。用户在首次使用时预设好报警接收号码，当需要将车子临时存放在外时，可用手机 APP 软件使把立开启设防状态，如果有人移动车子时，把立内部的触动感应装置会自动判断车子是否处于非法移动状态，如果感受到车子连续震动，把立会给用户拨打电话及发短信报警，用户发现车子被盗时即可开启 ODIERAPP 软件对车子进行定位及追踪，为找回自行车提供及时有利的信息。智能防盗把立采用非标准规格的防拆螺丝锁紧，使用普通工具无法拆卸，最大程度保证自行车安全。

*The smart anti-theft stem will be bound with ODIER APP on the first and also the users should preset a alarm receiving phone number. When need to park the bicycle outside temporary, you can use the phone APP to make stem opening fortified state. If anyone moves the bicycle, the stem internal touch sensor device will judge whether the bicycle is in illegal moving state. If it detects the bicycle shake continuously, the internal GSM module will alarm the user of the bicycle through calling and sending message. When the user realize his bicycles is stolen, he can open the ODIER APP promptly to locate the position of the bicycle and it will offer more timely favorable information for finding back the bicycle.*

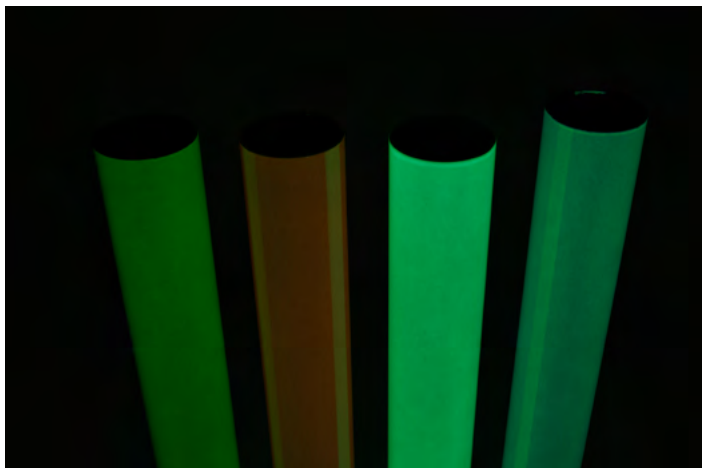
# 32

## 冷光漆

江苏杰凯化工有限公司

### LUMI

J&K CHEMICAL INDUSTRIAL CO., LTD.



冷光漆夜间会自主发光，让车辆从远处可看到自行车骑士而减少车祸机会。冷光漆白天会自体吸收外来光源并转化储存能量于涂膜分子里，夜晚再将能量转成光能释放发光。由于不需电力充电，只需吸收外在光源（太阳光或灯光），为节能减碳之环保涂料。放光最长达3小时，取决于吸收之光源强度和时间的，最大特点为应用最新奈米科技来发出黄光、蓝光、红光、绿光。最后冷光漆原料由德国及美国进口，已通过欧盟 RoHS、REACH、EN-71 及美国加州 65 法案、CPSIA 法规化学含量检测要求，对人与环境之安全性可以信赖。

*Lumi glows at dark to enable drivers see bicycles from a distance to avoid accident. At day, Lumi absorbs external light source, alters to energy and stores;At night, energy alters to light and glows. WITHOUT electrical charge, need only external light(sun/lamp), Lumi helps reduce CO2 emission and is environmentally friendly. Maximum glow time is 3 hours, relies on absorbed light strength and time. Lumi uniqueness is that it applied with Nanotechnology and able to glow in yellow, blue, red, and green. Lumi material imports from Germany and passes RoHS, REACH, EN-71, and California Prop.65 chemical content regulations making it reliable and safe.*

展位号 / [1]F1401

# 33

## 自行车前座

上海宝骑儿童用品有限公司

### BABY BICYCLE SEAT BQ-10

SHANGHAI BAOQI BABY GOODS CO., LTD.

本款座椅按EN14344:2004欧洲标准设计、制造,经德国莱茵技术有限公司认证,适用24"-28"自行车和电动自行车用的前座椅。适合9个月至3周岁,体重15公斤以内的儿童乘坐。

具有以下特点:专利产品:独创后交错背带组(专利号2L 2014 2.0239727.0),解决了长期困扰乘坐儿童背带从肩膀滑落的技术性难题,有效防止遇到紧急刹车时,乘坐儿童被抛出座椅,可能引起的伤害;具有快速拆卸功能:利用固定支架,弯管组件,除初次使用工具安装以外,今后使用不需要任何工具,孩子出行时装上,用完后卸下。



*The seat according to EN14344:2004 standard design, manufacture of Europe, by the German Rhine technology limited company certification, for 24"-28" bicycle and electric bicycle front seat. For 9 months to 3 years of age, body weight 15 kilograms of children ride.*

*A patent products: original interlaced straps after group (patent number: 2L 2014 2.0239727.0), to solve the technical problems have long plagued the ride child suspender slide from the shoulders, effectively prevent encounter emergency brake, take the children being thrown out seat, may cause damage. With rapid disassembly function: using the fixed bracket, bend pipe assembly, in addition to the initial use of tools installed outside, future use does not need any tool, the children travel fashion, after unloading.*



展位号 / [4.2]D1107



# 34



## 下坡车卡式踏板

维格车料（昆山）有限公司

### XGF04

WELLGO CYCLE ACCESSORIES (KUNSHAN)  
CO., LTD.

该踏板所具备的特点：

- 1、踏板与外框有入卡辅助倾角，定位容易上卡快速；
- 2、踏板侧向有保护盖减缓侧向擦撞受损；
- 3、大踏面加止滑钉强化 Off Road 止滑力；
- 4、卡式结构简洁排泥效果好；
- 5、模块设计维修简单容易。

将踏板分成卡式主体与外框两个元件设计，同时外框可以依着主体做有限性的角度变化，让卡式主体在尚未卡入扣片的状态下与外框呈现一角度差，这个角度差是用来帮助用户快速入卡的重要设计，当卡式主体入卡后会迫使车鞋平行于外框，进而促使踩踏施力时依靠着外框大踏面式的设计来增加骑车的稳定度。

#### G-Force Downhill Clipless Pedal

1. Outer cage is designed with an angle to help clipping into the claw faster and easier.
2. Protection cover at the end of the pedal to prevent damage when hit the rock.
3. Big platform with replaceable pins prevents slipping off the pedal.
4. Brevity Claw design is great for mud clearance.
5. Modular design makes maintenance easier.

The modular pedal body design offers a unique function to the riders. Combining the main clipless body with the outer cage is an innovative mechanism which fixes the cage at an angle before clipping in. This angle provides an easy way to clip into the claw. Once the rider clips into the pedal, the feet will reinforce the pedal cage to the position to fit his/her feet which would provide greater stability while riding.

展位号 / [1]A0722

# 35

## 铝合金车顶平台携车架

昆富工业股份有限公司

### ROOF MOUNTED BIKE CARRIER

KING ROOF INDUSTRIAL CO., LTD.



该款车架所具备的特点:

- 1、前轮固定装置，便利性高的棘轮迫紧旋钮，搭配活动式棘带固定座，可快速地将车体稳定的锁固于车顶；
- 2、快拆结构，加长型弧型夹座，适用市购基础、加宽型横杆；
- 3、前轮棘轮伸缩杆可静定装载 20~29 INCH 车胎，胎宽 0.7~2.25 INCH；
- 4、双重防盗锁，关切爱车族护车心切的心情，车架锁固于汽车，单车锁固车架；
- 5、折收收纳设计：无搭载自行车时，携车架可平整收纳。

Product features:

1. Front tyre clamping mechanism, stylish V clamping for users' easy loading.
2. Quick release bracket, to mount on common and wider cross bar, maximum 130 mm.
3. Aluminum wheel tray, adjustable to fit various bikes.
4. Locking system, dual locking system secure bike and bike carrier in the same time.
5. Foldable in a compact size when not in use.

展位号 / [4.2]D1424



# 36

## Super 2R 头盔

镇洋兄弟单车公司（镇洋自行车行）

### SUPER 2R HELMET

CHUNGYANG CYCLE CO., LTD.

市场上第一款 All Mountain 和 Downhill 两用头盔，可拆卸的下巴托可以让头盔方便地在全盔和半盔之间转变，让喜爱上山和下山的车手不必带 2 顶头盔，增加了骑行了乐趣。这顶头盔只有 694 克，要知道，这是一顶 all Mountain 用的头盔，也可以说是一顶全盔的重量，如此轻的重量，该是车手的最佳选择。Super 2R 使用 TAG 贴合系统，把头盔非常舒适地佩戴在车手的头上，不仅安全，而且舒适。

*True all-mountain performance is all about adaptability. It's about being prepared to tackle any off-road challenge with confidence, comfort and style. With its game-changing removable chin-bar, the all-new Super 2R is two helmets in one. Remove and stow the chin-bar in your pack or on your rack on long climbs, then lock it in place when you're ready to rip more aggressive terrain. This helmet weight only 694g. You know, this is an all mountain and a downhill certificated helmet. TAG™ Fit System comfortable and safety.*



展位号 / [2]A0722

# 37

## 快拆折叠式自行车车把

深圳市宏祥利科技有限公司

### QUICK RELEASE FOLDING HANDLEBAR

3H TECHNOLOGY CO., LTD.

国家专利设计的 F.H.S.2 快拆式可折叠车把, 无须任何工具 1 秒钟即可完成折叠, 省时并节省空间, 6061 标准铝合金材质重量更轻, 强度更硬, 铝合金锻造转换头可搭配任意规格车种, F.H.S.2 简单坚固的设计, 经 Din+ 严苛测试通过, 安全耐用, 经济实用。是骑行必备的选择! 国家专利设计的 F.H.S.2 快拆式可折叠车把, 无须任何工具 1 秒钟即可完成折叠, 省时并节省空间, 6061 标准铝合金材质重量更轻, 强度更硬, 铝合金锻造转换头可搭配任意规格车种。



*F.H.S.2 quick release folding handlebar is patented design, 1 seconds without any tools to complete the folding, saving time and space. Standard aluminum alloy 6061 makes it lighter and more strengthened, forged aluminum head can be converted with any kind of bikes, simple and robust designed F.H.S.2 passes rigorous testing through Din +, it is safe, durable, economical and practical. An essential choice for any rider! F.H.S.2 quick release folding handlebar is patented design, 1 second without any tools to complete the folding, saving time and space. Standard aluminum alloy 6061 makes it lighter and more strengthened, forged aluminum head can be converted with any kind of bikes.*

展位号 / [1]A0402

# 38

## 全能型胖胎

建大橡胶（中国）有限公司

### JUGGERNAUT PRO/ SPORT TIRE KENDA RUBBER (CHINA) CO., LTD.

JUGGERNAUT 为建大推出的一款全能型轮胎，一般路面，山地路面，雪地路面均能兼顾采用 120TPI 高密度帘布结构 +DTC 复合式胎面胶，可折叠式胎唇结构上突破市面上胖胎结构，大胆创新，变更帘布分布结构，较同规格重量降低 10% 胎面花纹采用粗旷颗粒，疏松分布，拥有绝佳的排泥，排雪性能，维持优越的操控性能及抓地力 2014 年新推出 26\*4.0 及 26\*4.50 两种全新尺寸。



*Juggernaut is the first kenda fat tire product. Inspired by the championship winning Millville 2 tire for grip in any environment. It can be used on road, rocky, muddy, and snow pavement. The construction of KENDA Juggernaut Pro is 120tp high- density cord casing with DTC -dual tread compound and folding bead. It has the construction's innovation on KENDA Juggernaut Pro fat tire, so the weight of KENDA Juggernaut is 10% lighter than the other fat products on the market. The big and open tread pattern design provides a ton of grip and space for the tire shed mud, loamy trails and snow. 2014 new size available - 26\*4.0 and 26\*4.50.*



展位号 / [1]F0101

# 39

## 甲冑防风保暖骑行服

杭州兰帕达体育用品有限公司

## ARMOR WINDPROOF CYCLING SUITS

HANGZHOU LAMBDA SPORT CO., LTD.

甲冑的设计灵感来源于欧美风的 METALLIC 和 PUNK，从视觉效果上，主色调为冷酷的黑色，红色的拉绳、套结、牙条，和荧光黄色的立领做时尚撞色。拼接的大面积亮银色三层复合网布，是整身最亮眼的地方，使重金属感和品质感跃然而出。小肩袖部位，拼接进口的意大利 MITI 碳纤维面料，高档且有科技感。不同于传统骑行服夸张的前短后长，此款后背拼接了一片和领口相同的针织复合布，骑行时，放下加长的后摆，可以遮住臀部，鲜艳的荧光色在骑行中，安全醒目。

*Armor design inspiration comes from the European style METALLIC and PUNK. Visually, dominant color of Armor adopts black, contrasting the red accessories and and fluorescent yellow collar. The big proportion of silver three-layer composite mesh cloth is the most attractive part, which shows a keen heavy metal sensation. Partial of the shoulder and sleeve splices MITI® carbon fiber fabric, reflecting the superior quality and the sense of science and technology. Different from traditional cycling jerseys extended rear lower hem, Armor splices a knitted composite cloth at the rear lower hem.*



展位号 / [4.2]D1401

## 自动变速执行器

舍弗勒贸易（上海）有限公司

## VELOMATIC SHIFT ACTOR

SCHAEFFLER TRADING (SHANGHAI) CO., LTD.



FAG VELOMATIC 兼容所有类型的自行车和驱动系统，使你的车辆随时处于最适合的档位。

该变速系统设计小巧、极为轻便，可安装在自行车的下管或座管内，从外部无法察觉，不会影响自行车的外观。它通过较短的变速线与外变速器或者内变速花鼓连接。自身的控制器与其他部件通过标准无线传感器网络为 ANT+ 或者 BLE，与智能手机、传感器、控制部件和驱动器等进行连接。无论是上坡、下坡还是在平地上行驶，FAG-VELOMATIC 可随时根据节奏、力度、车轮转速和坡度计算传统自行车或电动车上的最佳齿轮参数和最佳换挡点。

*Always in the right gear - wherever you are with the FAG VELOMATIC Compatible with every type of bicycle and drive system.*

*FAG Velomatic with its narrow, extremely light design, the gearshift system can be fitted in the down tube or the seat tube and is not visible from the outside. This means the system does not spoil the visual appearance of the bicycle. The system is connected to the hub gear or derailleur via a short shifting cable. The systems own controller with communication module connects with the electric drive system in an e-bike or the sensor bottom bracket in a conventional bicycle as well as the optionally available electric gearshift module and the rider's smartphone. The standard wireless sensor networks are ANT+ and BLE, interconnection standards are CAN, CAN open or LIN. Whether going uphill, downhill, or on the flat, on a conventional bike, with a derailleur or hub gears, or on an e-bike, The FAG VELOMATIC determines the optimum shifting point according to the riding conditions depending on the cadence, force, wheel speed and uphill or downhill gradient and operates the gear hub or derailleur quickly, easily and precisely.*

展位号 / [4.1]F1014



# 41

## 自行车智能手机架

义乌市唯路体育用品有限公司

### POWER PLUS MOUNT

YIWU WELLOO SPORTS GOODS CO., LTD.



本产品为全球第一款可充电手机架，内置 6000mAh 聚合物电源，体积小重量轻容量大，一体解决中长途骑行中使用手机导航、轨迹、码表、微信等软件时的电量续航问题，适用不同机型；手机架采用铝合金连接结构，安装在车把正中间，抗震强视线好；它同时也能给自行车前灯尾灯喇叭等充电，基本解决骑行用到的设备的电源问题。产品整体采用手机架跟电源分体式设计，在不骑车时电源随身携带就是一个充电宝，增加了使用效率，是目前唯一款骑行爱好者专属移动电源。

*This product is the world's 1st rechargeable cell phone holder, built-in 6000mAh lithium polymer battery, small size and light weight but large capacity solving power source problem while riding by using mobile phone GPS / Trail / Speedometer / Video chat and other APP, applying to most kinds of cell phone. The phone holder is made of aluminum alloy connecting structure, mounted on the handlebar stem that is shock proof and best version; it also can provide battery to bike headlight taillight and bells. Basically solve the power problem for riding.*

展位号 / [4.2]F0004

# 42

## 美利达公路车

美利达自行车（中国）有限公司

### MERIDA ROAD BIKE

MERIDA BIKE (CHINA) CO., LTD.

美利达的 RIDE 碳纤车款整合了许多设计巧思，就是为了提供车手获得最佳的舒适度：后上叉与立管结合的位置降低的 < 落差式 > 车架后三角，加上最薄处只有 10mm 的扁平式“弹性后叉”后上叉管形设计，还有后三角碳纤维管材加入具有减震效果的天然亚麻纤维配方。“DCT 双通道”技术制成的前叉提供过弯所需的高刚性的同时，特殊设计的前叉腿使减震性能再提升。此外还有舒适型车架几何的设计，需要的话车架后三角还可以容纳 28mm 的宽胎等等，RIDE 整体杰出的吸震性能表现，大幅增加舒适度，因而获得职业车手一致的赞美与好评。

*Merida RIDE carbon fiber car integrated many design ingenuity, is to provide the driver to get the best comfort: the rear upper fork and the vertical tube type < drop frame in combination with the position of the lower rear triangle, plus the thinnest flat "only the elasticity of 10mm after the fork" rear upper fork tube design. And after the triangular carbon fiber pipe adds natural flax fiber formulation has a damping effect. "Fork" made of double channel DCT technology provides cornering required for high rigidity at the same time, a front fork leg special design make the damping performance promotion. In addition to the comfortable type frame geometry design, the frame need words after the triangle can accommodate 28mm wide tires and so on, the overall RIDE outstanding shock absorption performance, a substantial increase in comfort, and won praise and acclaim Pro rider consistent.*



展位号 / [2]D1201

# 43

## FLOWTRAIL 27.5

久钰车料（昆山）有限公司

## FLOWTRAIL 27.5

JOY CYCLE PARTS (KUNSHAN) CO., LTD.



该款山地车轮组拥有 20mm 内宽超轻量铝轮圈，TUBELESS READY 设计。DSN 铝头，双抽不锈钢辐丝，花鼓前后 4IN1 统轴与穿透心轴轻松与快速转换，仅需换边盖。6 爪独立弹簧搭配 42 齿棘齿环，超快速咬合系统。使用日本 EZO 培林，使得转动非常滑顺与耐用。SHIMANO MTB 10/11S&SRAM 11S XD DRIVER 可转换与兼容。棘轮上 ABG 锻造胶合挡片设计，防止蛇咬可延长棘轮的寿命。

*The name says it all. Flowtrail is a perfect blend of gravity-biased & go-anywhere personalities. Light enough for cross country, resilient enough for endure & perfect for everyday, Flowtrail lets you find rhythm on your ride. Tubeless Ready profile-no more pinch flats for when the going gets rough. 4-in-1 front hub easily converts from QR, 10mm, 15mm & 20mm axles. Sleeved rim joint is stronger than a welded joint & does not hit damage the rim. A.B.G fortified allays cassette body resists damage from drive forces. Available in 26, 27.5 & 29 rim diameters. Hand built with DSN nipples.*

展位号 / [1]D0101



# 44

## 轻量版公路车

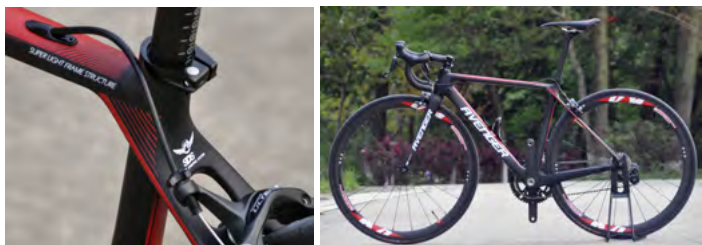
深圳市鸿富体育用品有限公司

### SUPER LIGHT ROAD FRAME

HONGFU SPORTS EQUIPMENT CO., LTD.

该款公路车车架采用独特的碳纤维成形技术，有效轻量化车架重量，车架最小尺寸仅 780g，并采用日本东丽 T1000 高强度碳纤维材料，大幅度强化车架的刚性，可以满足职业自行车运动员冲刺等高爆发力的需求。加大设计的下管，提供骑行者摇车时稳定的刚性踩踏。轻量化的同时也没有牺牲车架刚性。座管采用直接连上管的设计，让座管、后上叉、上管形成个一体化的小三角，让座管强度更强，同时结合后上扁平设计让骑行更加舒适，座管部位达到一个减震的效果，更好的应对长途骑行或者颠簸的路面。

*Frame using a unique carbon fiber forming technology, effective lightweight frame weight, the smallest size of the frame weighs only 780g, and using Toray T1000 high-strength carbon fiber material, greatly strengthening the rigidity of the frame, to meet the professional cyclists sprint, burst out Force needs. Increasing down tube design provides stable rider shake rigid stampede. Light weight frame but also without sacrificing rigidity.*



展位号 / [3]F0026

45

# 电机电池电控一体化轮

苏州杰翔电动车有限公司

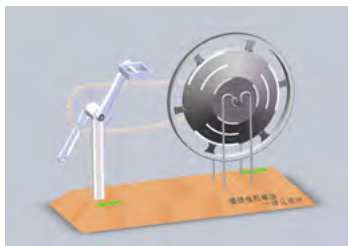
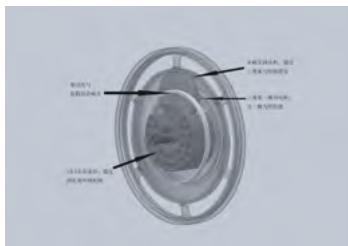
## INTEGRATED WHEEL

SUZHOU JIEXIANG ELECTRIC BICYCLE CO., LTD.



此方案由“一秒折叠车”原设计师提出，经过杰翔 TEAM 近三年的努力，该方案被成功产品化，成熟的产品也将于 2015 年面市。空心轴上设有对应的过线槽和孔，轴内镶有充电接口，电源自锁开关和 LED 电量显示。当人力骑行时，轮毂感应脚踏速度，同步增力进行辅助行驶（脚踏速度决定驱动速度），骑行者明显感觉省力。此节能驱动方案的诞生，集套件一体化、简单化、轻量化的优点于一身，将一改传统电动自行车电机、电池、电控等套件分置，连线繁琐，结构笨重，高耗低效等缺陷的驱动方式，值得在全球轻型车辆中推广。

*This design was proposed by Mr. Shi who designed the One Second Folding Electric Bicycle. Now this design has been applied to the production successfully by Jiexiang Team after 3 years hard work. The mature product will also be available in 2015. There is a groove and hole on the hollow shaft. There is also a self-locking power switch, LED power display and charging plug inside the hollow shaft. The integrated wheel has the advantages of integration, simplification and lightweight. This design changes the position of the motor, battery and controller on a traditional electric bicycle, which avoids many defects, such as cumbersome wiring, bulky structural, high consumption and low efficiency. It is definitely worthy to promote the integrated wheel design on the portable electric bicycle all over the world.*



展位号 / [4.1]D0003

# 46



## 男款短袖骑行服上衣

厦门森地客户外用品有限公司

### MEN'S CYCLING JERSEYS

SANTIC (XIAMEN) OUTDOOR CO., LTD.

款式名：男子短袖骑行服

版型：与中国体育科学研究所联合开发的 PRO 版型，版型与 3D 立体剪裁的完美结合。通过了解各种体型运动员骑行姿势，收集出海量数据进行研究，从而总结提炼出 SANTIC 运动 PRO 版型，采用 3D 立体裁剪，车手俯身骑行时，身体腹部收缩、腰背部拱起，骑行服能紧贴皮肤，从而有效减少风阻，高包裹性的裁剪设计能有助于更好的发挥力量，减缓长途骑行的肌肉酸痛。整款骑行服根据运动时人体的不同功能分区进行裁剪与面料选择，整件衣服共选用了多种不同材料，满足专业竞技骑行时身体各部位的功能要求。

*Style Name: Men's Short Sleeve cycling jerseys*

*Model With the PRO version of the type of sports science research Chinese jointly developed, the perfect combination of model and 3D stereo clipping. It has 4 kinds of functions of the original yarn fabric. Using the SANTIC DRY PLUS technology, then the power dry fabric make you feel soft and comfortable. Using the Breath-Dry technology on the back fabric, wore no bondage, and moisture wicking. The collar of the design of V type, avoid friction collars in the process of riding the discomfort of jaw. Italy imported sublimation printing technology bright color, environmental protection does not fade. Back pockets on both sides of a reflective stripe, make you safe riding at night. Using YKK open zipper.*



展位号 / [4.2]B1124

# Padrone Smart CC-PA500B

凯得爱依安全运动器材（太仓）有限公司

## PADRONE SMART CC-PA500B CATEYE (TAICANG) CO., LTD.



全新一代智能码表，采用了Padrone大显示画面，并通过Cateye Cycling App连接您的智能手机，可即时显示来电 / 邮件 / 短信提醒和手机所计测的骑行数据，也可通过Bluetooth Smart感应器扩充计测（踏频、心率、功率）。功能：

- 1、骑行速度（现在、平均、最高）/ 骑行距离（骑行距离-1/-2 累计距离）/ 骑行时间 / 时刻 / 高度（显示屏模式时）；
- 2、通过智能手机可简单设定；
- 3、手动输入累计距离；
- 4、自动计测模式；
- 5、ClickTec 技术；
- 6、FlexTight 支架；

*Smartphone is popular and many cyclists use smartphone apps. Padrone Smart is developed to allow customers to use a cycle computer with smartphone in an advanced way. Padrone Smart uses Bluetooth Smart technology and works with smartphone. Download a free Cateye Cycling app in your smartphone. When you ride a bike, place smartphone in your pocket and mount Padrone Smart on a bike. Functions:*

1. Current/maximum / average speed, Current/maximum/average cadence, Current/maximum/average heart rate, Current power, Total distance, Trip distance 1&2, Elapsed time, Clock, Altitude (in Mirror Mode)
2. Easy setup with smartphone app
3. Customizable display
4. Programmable odometer
5. Auto start/stop
6. ClickTec™ button
7. FlexTight™ universal bracket



# 48

## 超轻防风雨骑行夹克

北京奥易绿野车用装备有限公司

### TECH LT JACKET

ADVENTURE OUTDOORS CO., LTD.



VENTAIR 是一种最新的尖端纤维结构系统。它在提供防水、防风保护的同时，又有极好的透气和排湿性能。这一系统中的 VENTAIR WIND 可以为你提供最佳的防水和防风保护；超轻材质，成衣仅重 70G；弹力面料及人体工学设计，合体舒适；收纳系统，不使用时可将整件衣服收纳进后兜内，方便随身携带；腋下使用六通道纤维网状材质，透气性极佳；羊毛绒材质内领，舒适保暖；后衣襟超细硅胶防滑细节，防止衣服滑动；全身多处反光细节，保证夜间 360° 可视。

*Lightweight jacket made of elastic wind- and waterproof fabric with mesh panels for extra ventilation. Wind and waterproof fabric; Lightweight fabric - 70 g; Elastic fabric The jacket can be packed into its own zippered back pocket and easily be stored in jersey pocket; Mesh superlight in the arm pit for increased ventilation.*



展位号 / [4.2]B1419, B0021

# 49

## BMX 内置回转器

宁波力盟机械有限公司

## BMX INTERNAL ROTOR SYSTEM NINGBO POWER INDUSTRY CO., LTD.

该款内置回转器是中国和德国一起合作的成果，是改变 BMX 回转器历史的产品。和外置回转器相比较，内置回转器有下列优势：

- 1、外观简洁，大方；
- 2、刹车手感顺畅，干脆；
- 3、装配较外置简单；
- 4、维护方便。

*The internal rotor is cooperating products from China and Germany. It will change the history of BMX rotor system. It has the below advantages comparing with current external rotor system:*

- 1. It looks very clear after installing;*
- 2. Smooth braking feel;*
- 3. Simple installation;*
- 4. Easy maintenance.*



展位号 / [2]A1002

**中国国际自行车展览会组委会**

电 话: 0086-21-32513000 (总机)

传 真: 0086-21-32513220

地 址: 上海市金沙江路 1678 号 6 号楼 21 层  
绿洲中环中心

**上海创意产业中心**

电 话: 0086-21-63353106

传 真: 0086-21-63353118

地 址: 上海市虹口区沙泾路 10 号 503 室  
1933 老场坊创意产业集聚区

**CHINA INTERNATIONAL BIKE & E-BIKE FAIR  
ORGANIZING COMMITTEE**

Tel: 0086-21-32513000

Fax: 0086-21-32513220

Add: Floor 21, Building No.6, No. 1678, Jinshajiang Road,  
Putuo District, Shanghai.

**SHANGHAI CREATIVE INDUSTRY CENTER**

Tel: 0086-21-656580

Fax: 0086-21-63353118

Add: Room 503, No.10, Shajing Road, Hongkou District,  
Shanghai.(1933 Old Millfun)